

***** Measures can vary up to half an inch *****

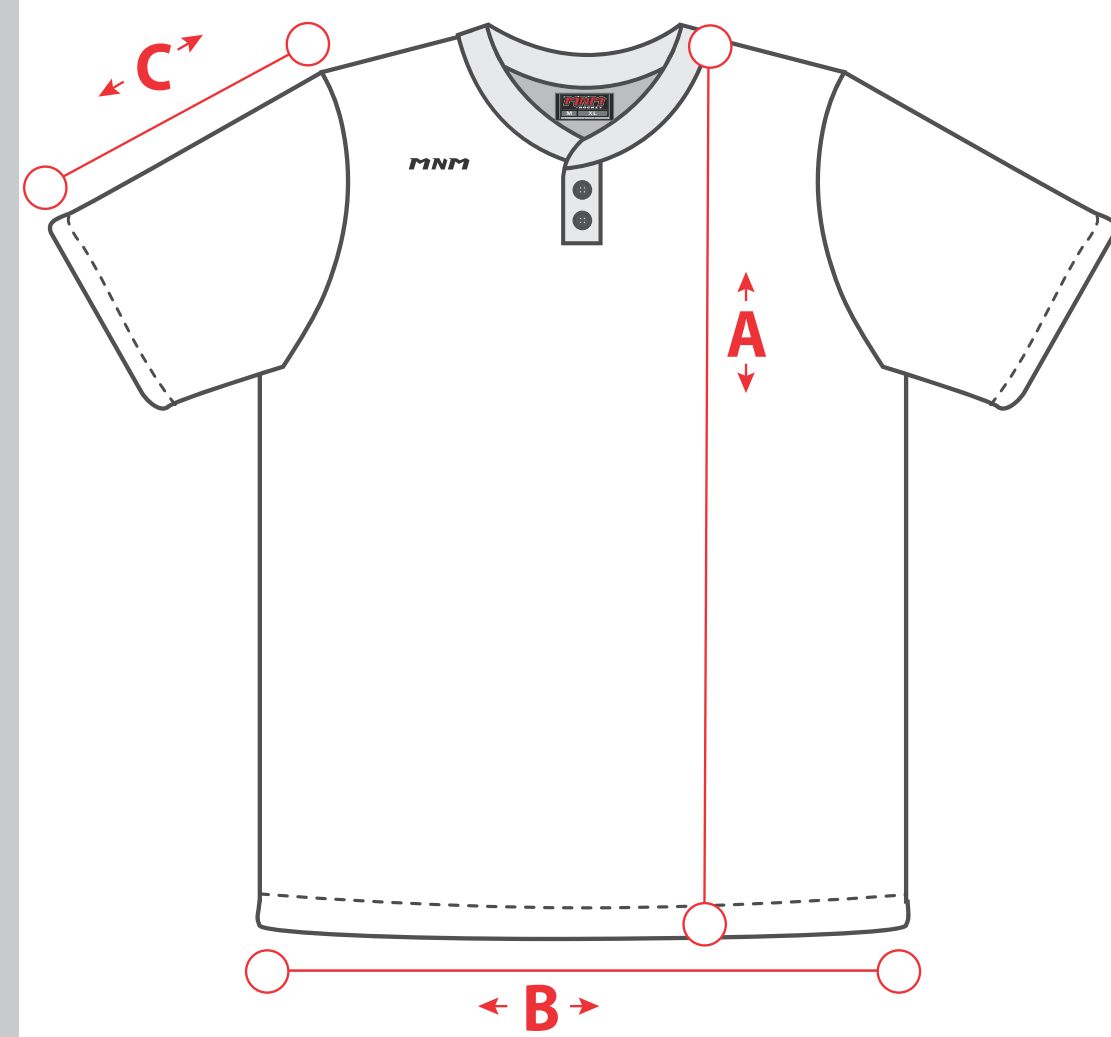
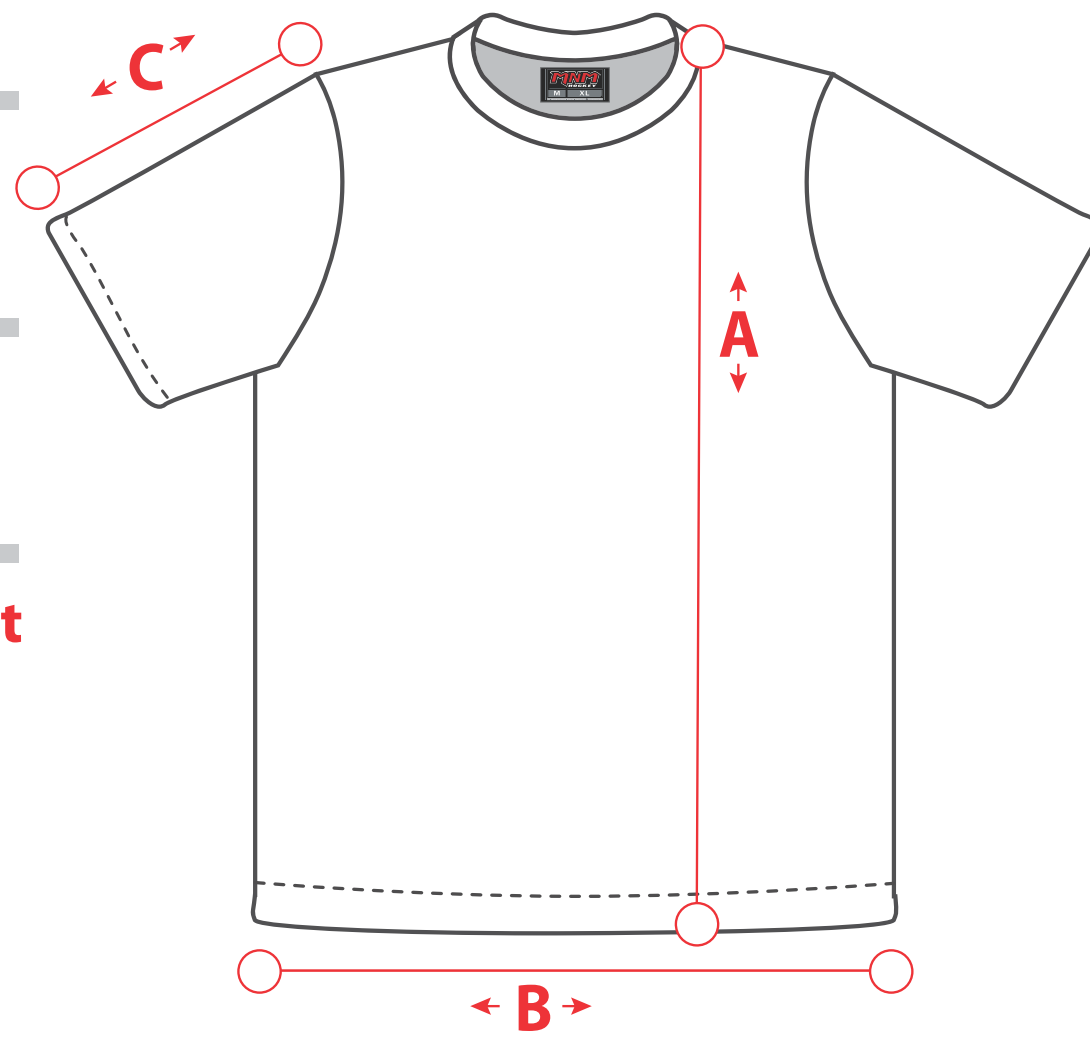
Regular / Col-Rond or V

2 Buttons collar

A Body height

B Body width

C Short Sleeve height



The measure of the body height is taken on the front piece * the back piece ; is rounded and longer of 1,5''*

Measures in inches

Grandeurs	A Height	B Body width	C SHORT Sleeve height
JR-SML	22	16.5	7.5
JR-M	23.5	17.5	8
JR-LG	26	19	8.5
JR-XL	27.5	20	9
SMALL	28.5	21	9.5
MEDIUM	29.5	22.5	10
LARGE	30.5	24	10.5
XL	31.5	25	11
2XL	32	26.5	11.5
3XL	32.5	28	12
4XL	33	29.5	12.5